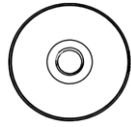
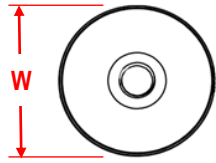


# Dimensions & Specifications

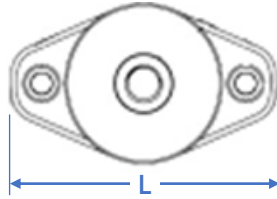
**100 amp  
TFT**



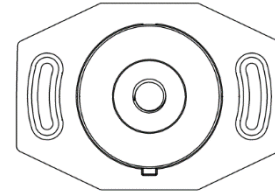
**250 amp  
LFT**



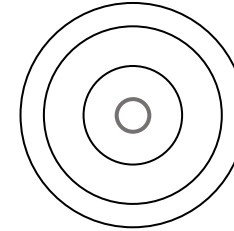
**250 amp  
SFT & 500 amp  
MFT**



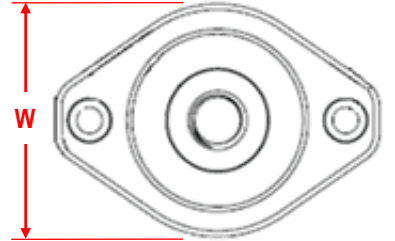
**250 or 500 amp  
Top Seal**



**750 or 1,000 amp  
BFT**



**750 or 1,000 amp  
XFT**



Distance from the external panel surface to the terminal's external contact surface

A

Distance from the external panel surface to the terminal's internal contact surface

B



Parameter	TFT	LFT	SFT	MFT	Top Seal	BFT	XFT
Rated Current (amps)	100	250	250	500	250 or 500	750 or 1,000	750 or 1,000
Peak Current (amps)	600	1,500	1,500	3,000	1,500 or 3,000	4,000 or 5,000	4,000 or 5,000
Electrical Connection Bolt Size	M5 or 10-32	M8	M8 or 5/16	M8 or 5/16	M8	5/16	M10 or 3/8
Dia of Terminal's Conductor	0.28" (7.1mm)	0.50" (12.7mm)	0.50" (12.7mm)	0.69" (17.5mm)	0.50" (12.7mm) or 0.69" (17.5mm)	0.88" (22.2mm)	0.88" (22.2mm)
"W" Dimension	1.03" (26.2mm)	1.34" (34.0mm)	1.34" (34.0mm)	1.34" (34.0mm)	1.74" (44.2mm)	1.96" (49.8mm)	1.95" (49.5mm)
"L" Dimension	1.03" (26.2mm)	1.34" (34.0mm)	2.25" (57.2mm)	2.25" (57.2mm)	2.47" (62.7mm)	1.96" (49.8mm)	2.75" (69.9mm)
"A" Dimension w No gasket	0.35" (8.9mm)	0.20" (5.1mm)	0.53" (13.5mm)	0.53" (13.5mm)	0.45" (11.4mm) – Panel Thickness	0.49" (12.5mm)	0.54" (13.7mm)
"B" Dimension w No gasket	0.46" (11.7mm)	1.07" (27.2mm)	0.74" (18.8mm)	0.74" (18.8mm)	0.82" (20.8mm) + Panel Thickness	0.86" (21.8mm)	0.95" (24.1mm)
"A" Dimension with gasket	0.35" (8.9mm)	0.28" (7.1mm)	0.61" (15.5mm)	0.61" (15.5mm)	0.45" (11.4mm) – Panel – Gasket(s)	0.57" (14.5mm)	0.62" (15.7mm)
"B" Dimension with gasket	0.46" (11.7mm)	0.99" (25.1mm)	0.66" (16.8mm)	0.66" (16.8mm)	0.82" (20.8mm) + Panel + Gasket(s)	0.78" (19.8mm)	0.87" (22.1mm)
IP Rating w Gasket or O-ring	IP68-watertight	IP68-watertight	IP68-watertight	IP68-watertight	IP68-watertight	IP68-watertight	IP68-watertight
Recommended Panel Material	Metal or Plastic	Metal	Metal or Plastic	Metal or Plastic	Metal or Plastic	Metal	Metal or Plastic
Min Panel Thickness	0.025" (0.6mm)	0.11" (2.8mm)	0.025" (0.6mm)	0.025" (0.6mm)	0.040" (1.0mm)	0.080" (2.1mm)	0.025" (0.6mm)
Max Panel Thickness	0.157" (4.0mm)	0.70" (17.8mm)	0.55" (14.0mm)	0.55" (14.0mm)	0.185" (4.7mm)	0.50" (12.7mm)	0.70" (17.8mm)
Panel Mounting Method	Panel Nut	Panel Nut	Panel Screws	Panel Screws	Flat Head Sheet Metal Screws	Panel Nut	Panel Screws
UL94 Flammability	V-0	5VA	V-0	V-0	V-0	5VA	V-0